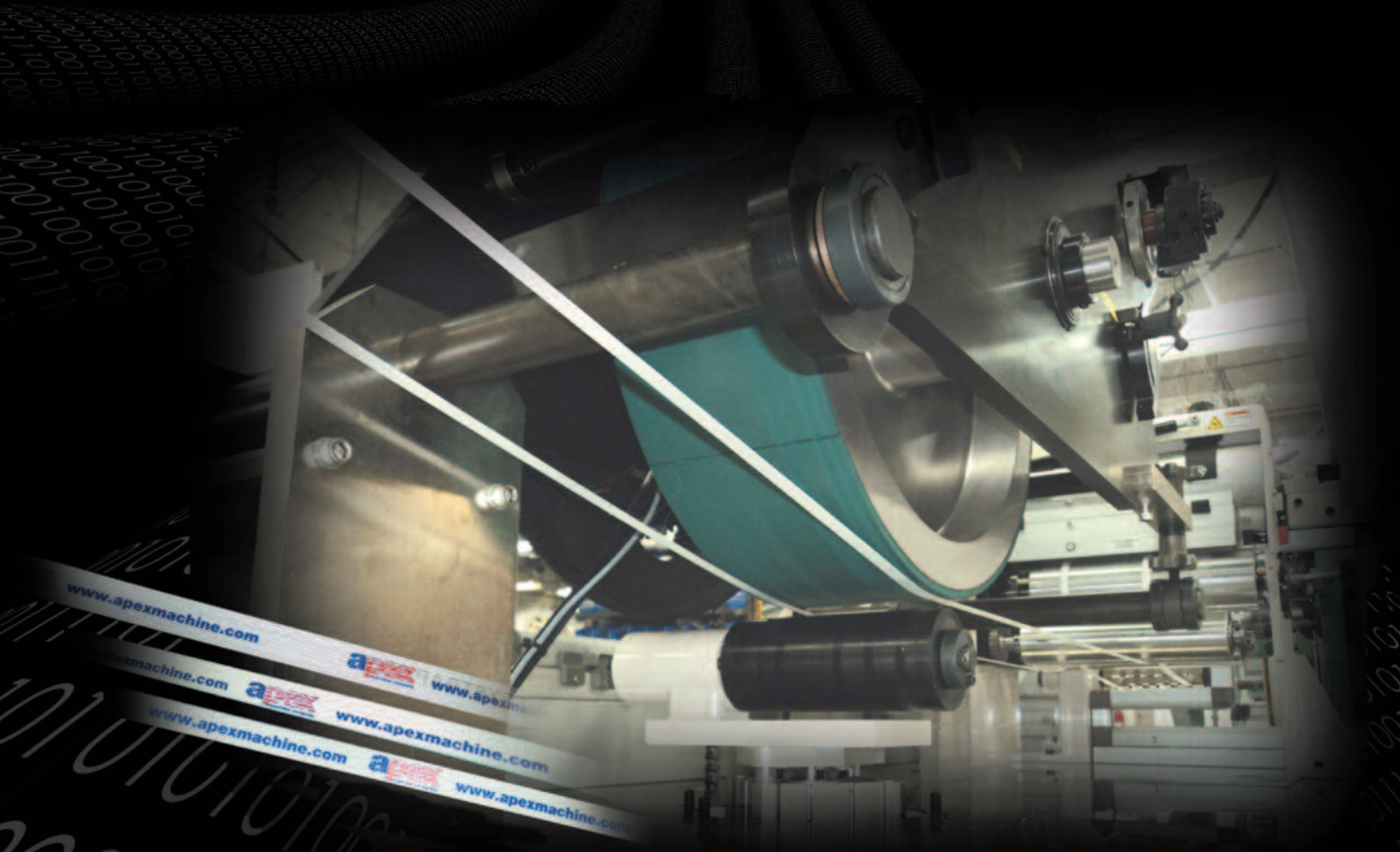




apex
machine company

Engineered Printing Solutions



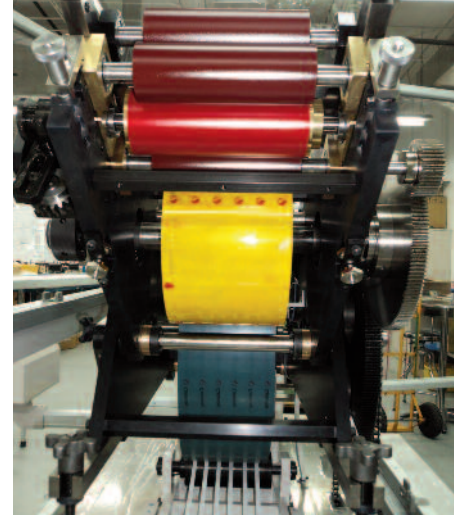
S-11 STRAPPING PRINTERS

high quality print onto strapping

S-11 Strapping Printers

NEW high quality solutions for printing onto strapping

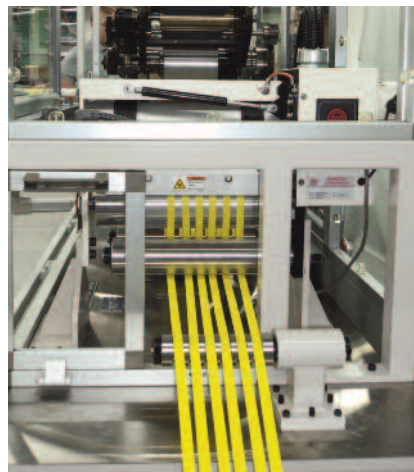
Apex strapping printer systems have been specifically designed to print on a wide variety of different strapping materials, in a variety of widths, to provide multi-color printed images with close registration capability between the colors. The Apex systems are offered in three basic configurations, covering 5 models, to meet virtually any production requirement and can be configured in 1 to 4 colors, offering capability and quality solutions not previously available in the industry.



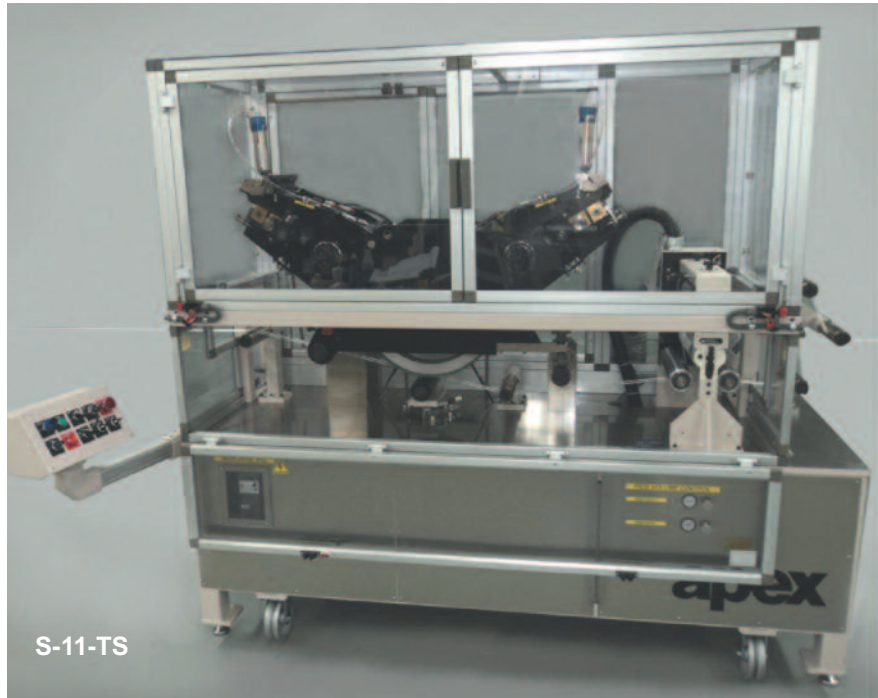
Operation

The appropriate width strapping material is webbed onto an automatic pulling unit where controls are activated to pre-treat the material (where required), to print it in multiple colors using the dry offset printing process, and to either dry the print image by exposure to ultraviolet light, or cure the graphics by hot air. The printers can be configured to handle from 1 to 12 lanes (maximum dependant on the strapping width) - thus providing the potential for high production levels where needed. The standard printing heads will provide a maximum repeat length of up to 17 inches (431mm) - where longer repeats are required, a machine variety with larger print cylinders can be offered with a maximum repeat length of 27 inches (685mm).

Apex Strap Printers can be engineered to run as stand-alone off-line systems or, alternatively can be configured to run in line with customer's extruders in multi-lane configurations at production rates of up to 375 feet per minute per lane.



S-11 Strapping Printers



S-11-TS

S-11-C

- 1-6 lanes
- Up to 200 feet per minute
- 1-4 colors with 9020-series color heads
- 17" repeat pattern

S-11-TC

- 1-6 lanes
- Up to 200 feet per minute
- 1-4 colors with 9020-series color heads
- 17" repeat pattern
- Optional corona pre-treatment

S-11-TE

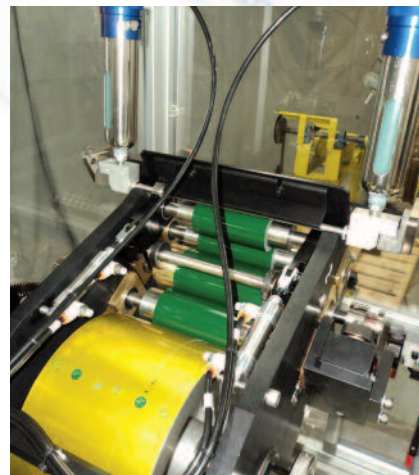
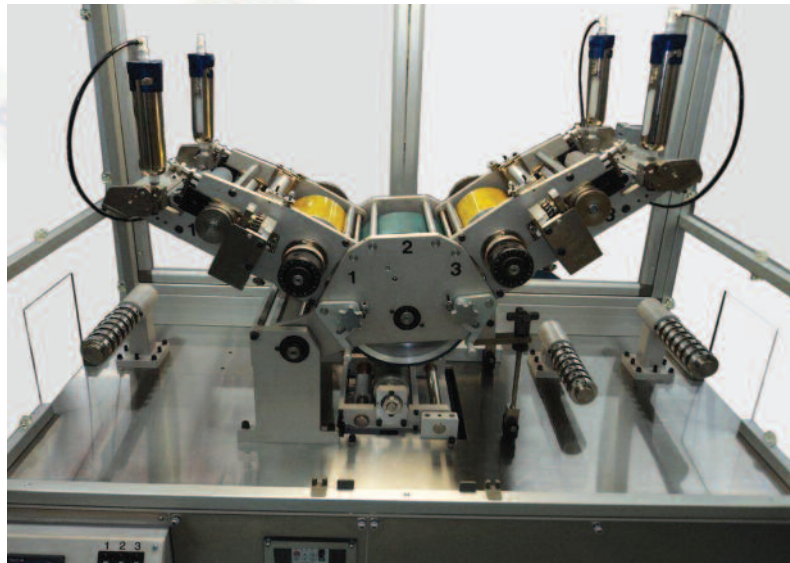
- 1-6 lanes
- Up to 300 feet per minute
- 1-3 colors with 1000-series color heads
- 17" repeat pattern
- Optional corona pre-treatment

S-11-TS

- 1-6 lanes
- Up to 375+ feet per minute
- 1-3 colors with 10,000-series color heads
- 27" repeat pattern
- Optional corona pre-treatment

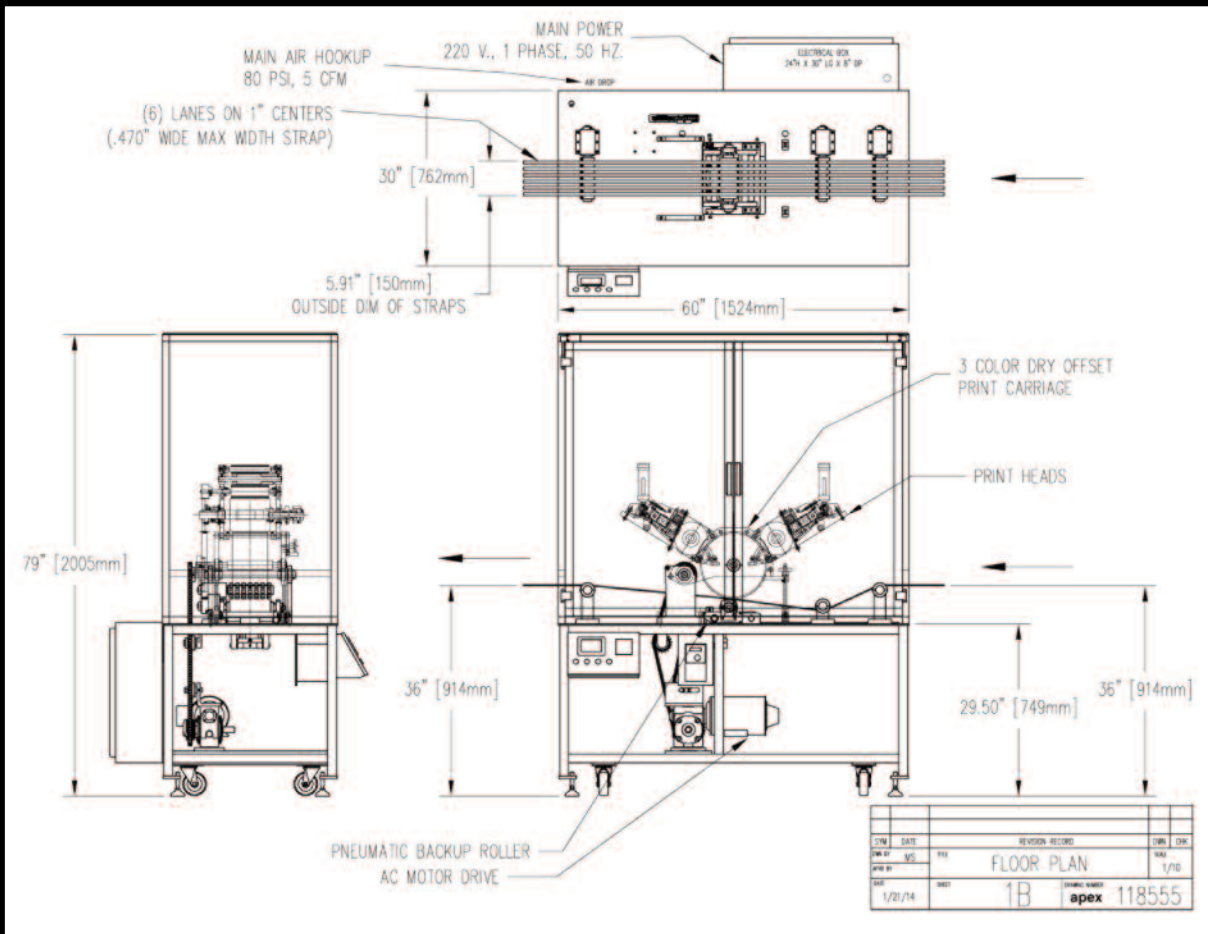
S-11-TAMG

- 1-12 lanes
- Up to 375+ feet per minute
- 1-3 colors with 10,000-series color heads
- 27" repeat pattern
- Optional corona pre-treatment



*All of our machines
are tailored to suit
each individual
customer's
requirements*

www.apexmachine.com



Technical

Strapping materials

- Diverse range of varying types including:
 - Polypropylene
 - Polyethylene
 - Woven Polyester
 - Woven Corded Polyester
 - Non-woven Polyester

Strapping widths from 3/8" to 5.5" (9mm to 140mm)

1-12 lanes (depending on strapping width)

Machine

- Voltage: 220/240v - 50/60 Hertz, or 380v - 50 Hertz, 415v - 50 Hertz, 480v - 60 Hertz 3-phase
- Amperage: 40 amps
- Compressed air: 10 cfm at 80 psi (5.5 bar)
- PLC: Allen Bradley, Siemens or Schneider
- 1 to 4 colors
- UV or Hot Air Drying
- Optional Corona pre-treater (required for some material substrates)

Dry Offset Printing System using:

- Low cost photopolymer printing plates
- Water wash out
- Air Dry or UV Dry inks (depending on system)

apex
machine company

Worldwide Headquarters:

Apex Machine Company, 3000 N.E 12th Terrace, Fort Lauderdale, Florida 33334-4497 USA

Tel: +1 954 566 1572 • Fax: +1 954 563 2844 • Email: email@apexmachine.com • Web: www.apexmachine.com